

South Fox Island Review

www.southfox.org

FILA P.O. Box 851, Traverse City MI 49685

Fall 2010



FILA is a 501c3 Non Profit supporting to the preservation of the South Fox Island Light Station. Supported by volunteers and lovers of the lighthouse.

To learn more about the South Fox Island Light Station, please visit: www.southfox.org.



GRAVESITE CLEARED

Don Stauffer pictured above with freshly cleared gravesite of the Civil War Veteran who fell to his death while painting the 1867 tower.

FILA FUN FACT

In 2010 FILA benefited from over 829 volunteer hours devoted to activities at the Light Station

Help spread the word! We are committed to sharing the experience of South Fox. If you know of any groups or organizations that would like a presentation, please contact:

Catherine Allchin
miboatlady@gmail.com
231-883-7645

2010 Wrap Up

During the 2010 navigation season, FILA continued to operate at the Fox Island Light Station under the terms of the DNRE Parks Use Permit. These activities fell into 3 general areas: grounds maintenance, exterior painting and cleanup of building interiors. A donated lawnmower stayed at the station making it easier to keep the grass cut which was always done during each visit. During a 3 day work session that turned into a week, **John Johnson, Don Stauffer, John Wells and Cathy Allchin** finished painting the boat house. **Jerry Spears and Chris Young** completed the structural support in the boat house and new doors will be addressed in 2011.

Jerry and Chris also worked with crews to scrape loose paint from interior walls of 1867 lighthouse and the fog signal building. All materials were carefully bagged and returned to mainland for disposal. FILA members assisted Ken Czapski of UPEA Engineering, contractor for the **Historic Structures Report**, during his data gathering trip in July. Part of his preliminary recommendations included: build structural support for chimney in fog signal building, install vents on window boards, clean out chimneys and increase ventilation throughout the buildings. These along with the installation of a temporary red metal roof on the 1867 building were able to be completed this season thanks to the volunteers who believe.

What lies ahead...

2011 will be an exciting year with focus on planning and fundraising as we begin actual restoration work on the 1867 building. Grounds maintenance will continue with focus on identifying and cultivating the natural grounds as they once were.

If you are interested in working at the station, please contact Phil at philfvon@chartermi.net

NOTE: The station is on an island accessible only by boat. Trips are dependent upon weather and you should flexible up to 3-4 days going out or coming back.



RED ROOF in place.

With the support of the DNRE and over 3 weeks time working, Jerry Spears and Chris Young worked night and day to install the protective metal roof. Over the course of the season Jerry and Chris have made over 22 trips in their own boat and completed major projects. In 2009 they spent 3 weeks moving stone, building walls and clearing around the boathouse. They have transported over 700+lbs material in 2010 alone and have been at the station EVERY time a trip was made, opening up the buildings, making sure every person or material arrived safely to shore. So much was made possible by their efforts. We are very grateful for their continued commitment to the station.



Proof that anything is possible.

Boathouse 2010



Boathouse 2004



Historic Structures Report UPDATE

The total overall Appeal for funding the HSR at the Light Station had a goal of \$13,000. A lead gift from Mike & Rhea Dow for \$8333 and \$2500 from Dick Lavanture, combined with the other two Phases of the Appeal for \$6667 made a total of over \$17,500. About 25% above the goal! MANY people have and are continuing to send donations, at this printing FILA would like to thank the following for their support, for those not listed please know that you are appreciated:

Mike and Rhea Dow
Dick Lavanture
Cal Karr/ Jayne Mohr
Donald and Karen Wilman
Tom and Mickey Bannow
Bob Berdan/Chuck Mefford
Tim Statler
Glenda Walker
Mark and Grace Thomsen
Jon and Joan Jacobs
Irish boat Shop-John Booth
Bergman Marine-Walstrom Marine
Bob Voyt
Joe Voyt
Gary and Jean Ziegler
Jeffrey Baillargeon
Ruth Brown
Bill and Nina Collins
Jay Eaton
Robert Harris
Mike and Joanie Jackson
Susan Odom
Jack and Phyllis Relyea
Dutch Zonderman / Bonny Everett
Charles Andrews
Linda Henry
David McCormick
Eric and Jill Ray
Alex Pong
Anna Sylvester
Walter Kaimer
Edward McDuffie
Bob Harris
Anna Sylvester
Jeff and Linda Basista
Jarves Post
Continued prayers and support

As we move forward with restoration the goals become greater both in scale of projects and cost for completing them. While full estimates won't be available until first quarter 2011, we can estimate a need of at least \$50,000 for matching funds / cost of materials / outside services to start next season. Your continued support is needed. We will be holding a silent auction in April with focus on original lighthouse artwork. Check the website for further updates.

ORAL HISTORIES

John Wells has been following up with oral history interviews. This summer he did two oral histories most of which was recorded for transcript. Mr. James Alger and Mr. Jim Stephen were both in the USCG in the early to mid 1950's and served together. They ran the supply 40' Utility boat out to South Fox for several years.

Upcoming: Robert June of Sault St. Marie, MI. He spent three seasons living on the island while in the Coast Guard with his wife and children.

Transcripts of the oral history reports will become available through our website after the new year. If you have or know someone who has a story about the island from past years please contact John Wells at 231-933-0125

2010 FESTIVALS

We started our 'show' season July 17th with a booth at the **INLAND SEAS MUSIC EVENT** in Suttons Bay. It was a sunny day, good participation and easy time to spend by the bay listening to music.

SCHOONER FEST Sept. 10-12 **It's getting better and bigger each year!** Even with rainy days the festival had continued traffic and many families came out to enjoy the displays. A special thank you to Terry and Anita Pratt, who worked the entire weekend and *then* decided to become members and to Don Stauffer for bringing his bead making tools and doing demonstrations, it was a lot of fun.

This was our third, year at the **LEELANAU STATE PARK HARVEST FEST** September 25th in Northport. We served pancakes, sausage and hot coffee to the few that braved the weather. Yes, it was wet and windy but fun. Still Thanks to the dedicated efforts of the FILA board members, especially from Pamela Nickerson who organized the details of the event. For the record, the warmest spot was by the grills flipping pancakes! Member support is and what will make all our events a success, thank you!

We need a new chairperson for festivals in 2011, if you have a talent and interest please contact Catherine Allchin at miboatlady@gmail.com or call 231-883-7645

Lightkeeper update

In 2005 FILA received a donated boat from MHA. Each season no less than 16+ trips are made to the island for work sessions. It takes more than a few to keep her maintained and we would like to thank Phil VonVoightlander for skippering her safely each and every trip. Jed Mooney for mechanical support. Northport Bay Boat Yard for haul out and Gene Schmall for shrinkwrapping her.

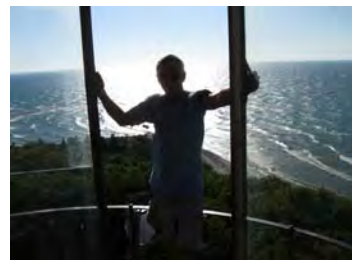
.Welcome New Board Member

Donald Stauffer

Don spent a week on the island this summer.

To read about it check out his blog:

<http://donaldstaufferfisherman.blogspot.com/>



"Wish List"

Gently used or new tools for the island.

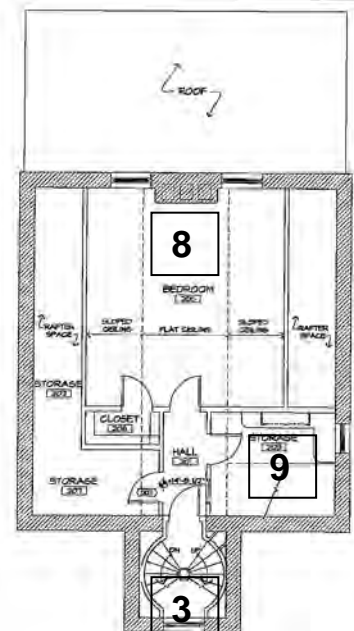
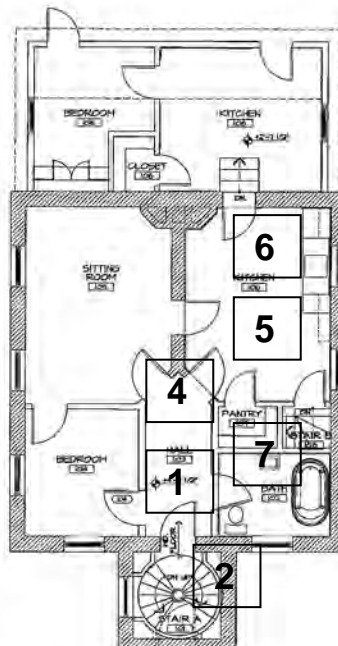
Claw hammer, steel handle
Ball pein hammer
Cross cut hand saw
#3 Phillips screwdriver
Straight blade screwdriver (round or square shank)
Carpenters square, large
Carpenters square, small
Vise Grip brand pliers 7R size
Needle nose pliers
Channel lock pliers, any size
Slip joint pliers
25' tape measure
Utility knife with replacement blades
Putty knife
Mill bastard file 8" or longer
Flat smooth file 8" or longer
Torpedo level
Carpenters level 24"
Set Box-open wrenches, inch size
Set Steel punches
Hack saw with blades
Wonder Bar
24" or 36" covered tool box

That's a good start! As we begin focused effort on the 1867 building restoration tools 'on hand' and on the island will be appreciated. This list is intended to fill a basic need for hand tools for general maintenance and Light Station projects. Please contact **John Wells 231-933-0125** kjwells@speednetllc.com
Thank you in advance for your generous donations!

ABOUT 1867 LIGHTHOUSE

- Year light first lit: 1867
- Year deactivated: 1934
- Construction: Schoolhouse type, square tower, cream brick painted white with red trim
- Light height: 39 ft above base, 68 ft above lake level

Inside the Original 1867 Light Station



FLOOR PLAN DRAWINGS COMPLETE FOR ENTIRE STATION

Included in the HSR report are cad drawings of the buildings themselves. Shown above is a sampling of detailed room shots taken this past summer.



Become a FAN of Facebook!

<http://www.facebook.com/?ref=logo#!/pages/South-Fox-Island-Lighthouse-Association-Michigan/291631009291>



FILA

Fox Island Lighthouse Assoc.
PO Box 851 Traverse City MI 49685

MEMBERSHIP FORM DATE _____
Name (please print) _____

Address _____

City, State, Zip _____

E-mail _____

Phone _____

_____ \$25 ___ \$50 ___ \$100 ___ Other

Membership includes subscription to "Fox Island Views" Newsletter and the opportunity to join work crews on the island, participate at festival events..

Please check this box if you would like to receive the book: *The Fox Islands, North and South* by Kathleen Craker Firestone.

*Donations of \$100 or more please

Mail to: FILA

PO Box 851 Traverse City MI 49685
President John McKinney 231-947-1926

www.southfox.org

Thank you!

Your support makes a difference!

Northport Bay Boat Yard

www.npbby.com

Northport Bay Boat Yard is Grand Traverse Bay's largest service and storage facility offering professional service and quality maintenance to area boaters for over 35 years.

(231) 386-5151



Harbor Springs / Charlevoix

The foundation of our operation is a commitment to the welfare of our most valuable resources: OUR CUSTOMERS, OUR STAFF and THE COMMUNITIES in which we live.

(231) 526-6225

www.irishboatshop.com



Established in 1946, Walstrom Marine is a premier, full service marina in one of the most beautiful areas of the Great Lakes. We offer a wide variety of services with an experienced personnel and pride ourselves in offering the best service for a fair price.

(231) 526-2141

www.walstrom.com



Marine Surveys /
Maintenance / Repair /
Rigging / Commissioning/ Boat
Deliveries

231-590-0224

Jedmooney321@yahoo.com



231-947-2626

231-943-3113

Traverse City, MI 49684

www.crustedcreations.com

www.miboatlady.com